

2-DAY ONLINE AUCTION



WORLDWIDE LEADER IN LIGHTING
CLOSING 1,000,000 SQ. FT.
VERSAILLES, KENTUCKY FACILITY

Featuring: Late Model Fanuc Robots, CNC & Conventional Machine Tools, Bruderer High Speed Presses, Welding, Complete Photometry, QA and Inspection Labs, Packaging, Storage, Forklifts, Large Quantity of Motors, Gear Reducers, Pumps and Bearings, Multi-Million Dollar Inventory of Consumer Electronics & More



LEYBOLD OPTICS DYNAMET 4V VACUUM SPUTTERING MACHINE



UP TO 60 TON

(4) BRUDERER, MITSUI SEIKI BRUDERER & VAMCO HIGH SPEED PRESSES

DAY 1

Sale Closing From:
Tuesday, December 3, at 9:00 AM ET
Sale Location:
900 Tyrone Pike, Versailles, Kentucky 40383
Inspection:
Monday, December 2 from 9:00 AM 4:00 PM ET

DAY 2

Sale Closing From:
Wednesday, December 4, at 9:00 AM ET
Sale Location:
900 Tyrone Pike, Versailles, Kentucky 40383
Inspection:
Monday, December 2 from 9:00 AM – 4:00 PM ET



24 AVAILABLE

FANUC, ABB AND STAUBLI ROBOTS



PERFECTION Industrial Sales

Perfection Industrial Sales ph +1-847-545-6374
www.perfectionindustrial.com fax +1-847-427-8884

Joe Lundvick, KY Auctioneer License # RP 4236 & Scott Lonkart, PA Auctioneer License # AU003232R

Online Bidding at
www.perfectionindustrial.com

Sale is Being Held in Conjunction With:



The Branford GROUP
Equipment Auctions Worldwide

ph 203-488-7020 • www.TheBranfordGroup.com

PRESSES & MACHINE TOOLS

DAY 1

Sale Closing From:

Tuesday, December 3, at 9:00 AM ET

Sale Location:

900 Tyrone Pike, Versailles, Kentucky 40383

Inspection:

Monday, December 2 from 9:00 AM 4:00 PM ET



UP TO 60 TON

(4) BRUDERER, MITSUI SEIKI BRUDERER & VAMCO HIGH SPEED PRESSES



4 AVAILABLE

US BAIRD 3-25 TRANSFER PRESSES

PRESSES & MACHINE TOOLS

(4) BRUDERER, MITSUI SEIKI BRUDERER & VAMCO HIGH SPEED PRESSES, up to 60-Ton

(4) US BAIRD 3-25 TRANSFER PRESSES

(8) MSE, PRE/NORWALK INNOVATION PALLET TYPE UNCOILERS, up to 5,000 Lb Capacity

2014 SOUTHWESTERN IND. TRAK DPMS3 CNC MILL

2011 SOUTHWESTERN IND. TRAK KE CNC MILL

(2) 2009 & 2007 BRIDGEPORT EZ TRAK CNC MILLS

(2) ROMI BRIDGEPORT EZ-PATH CNC LATHES

(11) CLAUSING COLCHESTER, HARDINGE, MONARCH, SOUTH BEND, SUMMIT & SHARPE LATHES, Various Models & Capacities

(9) BRIDGEPORT MILLS, Various Models

(12) BROWN & SHARPE, MITSUI, REID BROTHERS, TAFT PIERCE & CONCORD HAND FEED AND HYDRAULIC SURFACE GRINDERS, Various Models

ALSO AVAILABLE: (4) JENFAB 4 TANK TUNNEL TYPE PARTS WASH SYSTEM W/ DRYER, VIBRATORY BOWL FINISHERS, DAKE 50-TON SHOP PRESS, (3) SUNNEN HONES, POWERMATIC 3 HEAD GANG DRILL, (4) POWERMATIC & FOSDICK HD DRILL PRESSES, VERTICAL & HORIZONTAL BANDSAWS, BOX & PAN BRAKES, FOOT SHEARS, TOOL & CUTTER GRINDERS, DRILL POINT GRINDERS, DOUBLE END & CARBIDE GRINDERS, BELT GRINDERS, BELT & DISC SANDERS, DRILL PRESSES, TIG, MIG & ARC WELDERS, PLASMA WELDING SYSTEMS, FLEX ARM TAPPERS, (12) KURT VISES, BENCH VISES, SINE ANGLE PLATES, DEMAGNETIZERS, TRUING DEVICES, ANGLE PLATES, VEE BLOCKS, BROACH SETS, ROTARY TABLES, VISES, PERISHABLE TOOLING, POWER & HAND TOOLS, GRINDING FIXTURES, ARBOR PRESSES



2014

SOUTHWESTERN IND. TRAK DPMS3 CNC MILL



2 AVAILABLE

ROMI BRIDGEPORT EZ-PATH CNC LATHES



2 AVAILABLE

BRIDGEPORT EZ TRAK CNC MILLS



LINCOLN SQUARE WAVE TIG-355 WELDER



UP TO 5,000 LB

8 AVAILABLE

MSE, PRE/NORWALK INNOVATION PALLET TYPE UNCOILERS



4 AVAILABLE

JENFAB 4 TANK TUNNEL TYPE PARTS WASH SYSTEM W/DRYER



SELECTION OF WELDERS

Online Bidding at
www.perfectionindustrial.com

View our current auction schedule at www.perfectionindustrial.com

To discuss your requirements for an auction, please call Perfection Industrial +1.847.427.3333

(24) ROBOTS, FORKLIFTS & ROLLING STOCK



2012

STAUBLI TX200 ROBOT



24 AVAILABLE

FANUC, ABB AND STAUBLI ROBOTS



2017

FANUC LR MATE 200ID 7L ROBOT W/ R-301B



2012

STAUBLI TP80 ROBOT

2 AVAILABLE



2015

STAUBLI RX160 ROBOT



3 AVAILABLE

ABB FLEX PALLETIZER ROBOT



4 AVAILABLE

FANUC A-520I ROBOT



AS NEW AS 2005

FANUC R-2000I 165F ROBOT

(24) ROBOTS

2012 STAUBLI TX200 ROBOT

2015 STAUBLI RX160 ROBOT

(2) 2012 STAUBLI TP80 ROBOTS

(3) ABB FLEX PALLETIZER ROBOTS

(3) FANUC LR MATE 200I 7L ROBOTS,
New as 2017

(8) FANUC R-2000I 165F ROBOTS,
New as 2005

(4) FANUC LR MATE 200I 5P
ROBOTS, New as 2006

(4) FANUC A-520I ROBOTS

FORKLIFTS & ROLLING STOCK

(6) CAT, TOYOTA & MITSUBISHI LPG
FORKLIFTS, up to
7,600 Lb Cap.

(16) CAT, TOYOTA & CROWN
ELECTRIC FORKLIFTS, up to
5,000 Lb Cap.

(5) CROWN ELECTRIC WALKIE-TYPE
FORKLIFTS & PALLET JACKS, up to
4,000 Lb Cap.

TENNANT 8210 LPG FLOOR
SCRUBBER

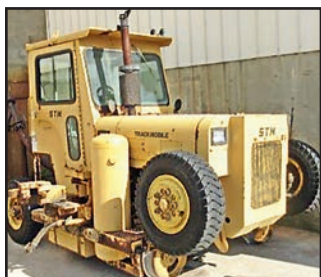
2014 TENNANT T5 FLOOR
SCRUBBER

ASLO AVAILABLE: ELEVATING WORK
PLATFORMS, ELECTRIC LIFT CARTS,
PALLET JACKS, MOTOR JACKS, HAND
TRUCKS, ETC.



22 AVAILABLE

CAT, TOYOTA, CROWN, MITSUBISHI ELECTRIC & LP FORKLIFTS



TRACKMOBILE
5-TM MOBILE
RAILCAR
MOVER



CROWN
FC4525-50
ELECTRIC
FORKLIFT

5,000 LB



7,600 LB

MITSUBISHI FD40K1 GAS FORKLIFT



TENNANT 8210 FLOOR SCRUBBER

View our current auction
schedule at www.perfectionindustrial.com

SPARES INVENTORY, FACTORY & SUPPORT EQUIPMENT

DAY 1

Sale Closing From:

Tuesday, December 3, at 9:00 AM ET

Sale Location:

900 Tyrone Pike, Versailles, Kentucky 40383

Inspection:

Monday, December 2 from 9:00 AM 4:00 PM ET

SPARES INVENTORY

(1,000+) BALDOR, RELIANCE, WEG, SIEMENS, LINCOLN ELECTRIC MOTORS, UP TO 250 HP, (500 +) GEAR REDUCERS, (200 +) VACUUM PUMPS

FACTORY & SUPPORT EQUIPMENT

ATLAS COPCO GA200 250 HP AIR COMPRESSOR

PIONEER PHL 1200 AIR DRYER

(125) LISTA, STANLEY VIDMAR, LYON & NU-ERA MULTI-DRAWER TOOL CABINETS

(26) STRONGHOLD, LYON & DURHAM HEAVY DUTY SHOP CABINETS

ALSO AVAILABLE: SOUTHWORTH, PRESTO & BISHAMON HYD SCISSOR TABLES, FLAMMABLE LIQUID STORAGE CABINETS, HARDWOOD TOP WORK BENCHES



LEYBOLD SOGEVAC SV300B VACUUM PUMP



HYTROL POWER CONVEYORS



150 PSIG

PIONEER
PHL 1200
AIR DRYER

**Online Bidding at
www.perfectionindustrial.com**



125 AVAILABLE

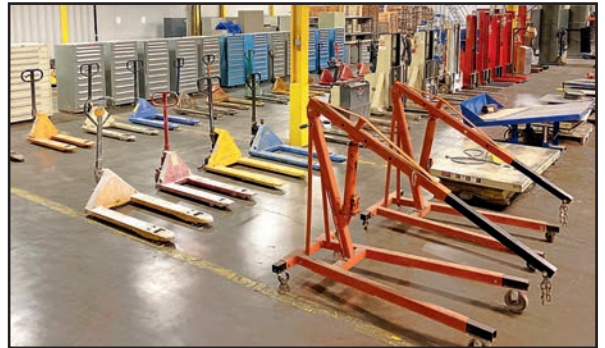
LISTA, STANLEY VIDMAR, LYON & NU-ERA BALL BEARING TOOL CABINETS & STORAGE CABINETS



2,000 PIECES



ELECTRIC MOTORS UP TO 250 HP, GEAR REDUCERS
& VACUUM PUMPS



LARGE ASSORTMENT OF MATERIAL HANDLING

View our current auction schedule at www.perfectionindustrial.com

To discuss your requirements for an auction, please call Perfection Industrial **+1.847.427.3333**



**PERFECTION
Industrial Sales**

Perfection Industrial Sales
www.perfectionindustrial.com

Online Bidding at
www.perfectionindustrial.com

ph +1-847-545-6374
fax +1-847-427-8884

Joe Lundvick, KY Auctioneer License # RP 4236 & Scott Lonkart, PA Auctioneer License # AU003232R

Sale is Being Held in Conjunction With:



**The
Branford**
GROUP
Equipment Auctions Worldwide

ph 203-488-7020 • www.TheBranfordGroup.com

VACUUM SPUTTERING MACHINE, TESTING, R&D DEPARTMENT

DAY 2

Sale Closing From:

Wednesday, December 4, at 9:00 AM ET

Sale Location:

900 Tyrone Pike, Versailles, Kentucky 40383

Inspection:

Monday, December 2 from 9:00 AM – 4:00 PM ET

TESTING, R&D DEPARTMENT (OVER 500 ITEMS)

2011 NORDSON DAGE XD7600NT

DIAMOND X-RAY INSPECTION SYSTEM

LING 612VH ELECTRODYNAMIC SHAKER, s/n 64, w/Control Rack

ROSS DPM-10 SS DOUBLE PLANETARY MIXER

2008 FRIEDRICH PALLENTIN/YSTRAL MIXING SYSTEM W/ SIEMENS TD200 PLC CONTROL

CINCINNATI SUB-ZERO WM-2600-3.5-SC/WC WALK-IN ENVIRONMENT CHAMBER

(2) CINCINNATI SUB-ZERO ZPHA-80-15-15-SC/WC ENVIRONMENT CHAMBERS

CINCINNATI SUB-ZERO ZPH-44-15-SCT/WC ENVIRONMENT CHAMBER

(2) CINCINNATI SUB-ZERO CTS-19-2-SC/WC ENVIRONMENT CHAMBERS

CINCINNATI SUB-ZERO VTS-9-15-155-S/RAC ENVIRONMENT CHAMBER

(7) CINCINNATI SUB-ZERO CTS-19-2-SC/WC ENVIRONMENT CHAMBERS

CINCINNATI SUB-ZERO VTS THERMAL STOCK CHAMBER

SPITZENBERGER SPIES PAS 5000

4-QUADRANT AMPLIFIER, s/n A4949 00/0 1012

AMRAY 1920T-ECO SCANNING ELECTRON MICROSCOPE, s/n 19225010

GONIOMETER LIGHT MEASUREMENT SYSTEM W/ KIKUSUI PCR500M AC

POWER SUPPLY, Yokogawa WT3000

Precision Power Supply, (3) Keithley 2000

Multimeters, Keithley 6485 Picometer, (2) HP

6675A DC Power Supplies and (1) HP 6674A

DC Power Supply

VACUUM SPUTTERING MACHINE

2011 LEYBOLD OPTICS DYNAMET 4V AUTOMATIC LOAD/LOCK TYPE VACUUM SPUTTERING MACHINE FOR 3D COATING.



2011

LEYBOLD OPTICS DYNAMET 4V VACUUM SPUTTERING MACHINE



LING 612VH ELECTRODYNAMIC SHAKER



ROSS DPM-10 MIXING SYSTEM



2011

NORDSON DAGE XD7600NT DIAMOND X-RAY INSPECTION SYSTEM



CINCINNATI SUB-ZERO ZPHA-80-15-15-SC/WC ENVIRONMENT CHAMBER



AMRAY 1920T-ECO SCANNING ELECTRON MICROSCOPE



CINCINNATI SUB-ZERO DOUBLE DOOR ENVIRONMENT CHAMBER



FRIEDRICH PALLENTIN/YSTRAL MIXING SYSTEM

2008

CINCINNATI SUB-ZERO ENVIRONMENT CHAMBER



CINCINNATI SUB-ZERO WM-2600-3.5-SC/WC WALK-IN ENVIRONMENT CHAMBER

TESTING, R&D DEPARTMENT CONTINUED



8' DIAMETER LUMENS SPHERE FOR LIGHT OUTPUT TEST SYSTEM, W/ HP 6030A SYSTEM POWER SUPPLY, SPITZENBERGER SPIES EV 1200/FS POWER AMPLIFIER AND NT 1200 POWER SUPPLY, INVERTRON LC-1201B DYNAMIC LINE CORRECTOR, AND CONTROL CABINET



TRUMPF HL 54P PRECISION LASER

2007



PERKIN ELMER TGA 7 THERMOGRAVIMETRIC ANALYZER

TESTING, R&D DEPARTMENT (CONT'D) (OVER 500 ITEMS)

(4) GAMMA SCIENTIFIC SPHERES, Various Models and Sizes

8' DIAMETER LUMENS SPHERE FOR LIGHT OUTPUT TEST SYSTEM W/ HP 6030A SYSTEM POWER SUPPLY, Spitzenberger Spies EV 1200/FS Power Amplifier and NT 1200 Power Supply, Invertron LC-1201B Dynamic Line Corrector, and Control Cabinet

5' DIAMETER LUMENS SPHERE FOR LIGHT OUTPUT TEST SYSTEM W/ SPITZENBERGER SPIES EV 1200/FS POWER AMPLIFIER AND NT 1200 POWER SUPPLY

EVERFINE 2M INTEGRATING SPHERE, s/n 5040083

LABSPHERE CA-10834-000 APPROX 2M SPHERE, s/n 1028119156

AMRAY 1920T-ECO SCANNING ELECTRON MICROSCOPE

EDWARDS 8 ROTARY VANE VACUUM PUMP, s/n 04302013

EDWARDS 8 E2M8 ROTARY VANE VACUUM PUMP, s/n 29095

L & L WQ226-FC59 SPECIAL FURNACE, s/n F404LL, 2200 Degree F Max Temp

US CENTRIFUGE SYSTEMS A540 AUTOMATIC CENTRIFUGE, s/n W1027

2007 TRUMPF HL 54P PRECISION LASER

UNITEK MIYACHI LW 51 COMPACT YAG LASER

(9) UNITEK MIYACHI LW50A-1E YAG LASERS
TAYLOR WINFIELD TYPE EB-1 STYLE 2 SPOT WELDING STATION

UNITEK MIYACHI HF25 DC RESISTANCE WELDING SYSTEM

NIKON VMA-2520 CNC VIDEO MEASURING SYSTEM

OLYMPUS I-SPEED VIDEO CAMERA

WILSON ROCKWELL SERIES 2000 DIGITAL HARDNESS TESTER

ECKEL ANECHOIC CHAMBER ACOUSTIC TESTING BOOTH

TECHNE SBL-2 FLUIDIZED BATH, s/n 18169-21



5' DIAMETER LUMENS SPHERE FOR LIGHT OUTPUT TEST SYSTEM, W/ SPITZENBERGER SPIES EV 1200/FS POWER AMPLIFIER AND NT 1200 POWER SUPPLY



NIKON PROFILE PROJECTOR & WILSON ROCKWELL DIGITAL HARDNESS TESTER

View our current auction schedule at www.perfectionindustrial.com



SELECTION OF TEST EQUIPMENT

ALSO AVAILABLE: OPTICAL COMPARATORS, PROFILE PROJECTOR, TENSILE TESTER, DIGITAL HARDNESS TESTERS, DYNASCOPES, MICROSCOPES, LIGHT ILLUMINATORS, LUMINESCENCE SPECTROMETERS, FIBER OPTIC SPECTROMETERS, PHOSPHORIMETER, METALLOGRAPHS, PROGRAMMABLE VISCOMETERS, THERMOGRAPHIC ANALYZERS, GAS SORPTION ANALYZERS, VOLTAGE REGULATORS, UNIVERSAL DIGITAL CONTROLLERS, RADIATION PYROMETERS, IMAGING RADIOMETER, DIGITAL LAB SCALES, OSCILLOSCOPES, PULSE GENERATORS, MULTIMETERS



US CENTRIFUGE SYSTEMS A540 AUTOMATIC CENTRIFUGE



LOT OF (4) TEKTRONIX OSCILLOSCOPES



9 AVAILABLE

UNITEK MIYACHI LW50A-1E YAG LASERS

To discuss your requirements for an auction, please call Perfection Industrial **+1.847.427.3333**

SPARES INVENTORY, FACTORY & SUPPORT EQUIPMENT

SPARES INVENTORY

(\$1,000,000 +) REPLACEMENT VALUE OF ASSORTED BEARINGS

(\$2,250,000+) REPLACEMENT VALUE OF ASSORTED CIRCUIT BOARDS, CONTROL PANELS, BREAKERS, FUSES, PRESSURE SWITCHES, VARI-SPEED DRIVES, TRANSFORMERS, RELAYS, MAGNETIC BRAKES, SOLENOID VALVES, BALLASTS, MICROSWITCHES, SERVO MOTORS, CONTROL MODULES, PROXIMITY SWITCHES, WIRE & CABLE, PLUS MANY MORE ITEMS TOO NUMEROUS TO LIST – PLEASE VISIT OUR WEBPAGE FOR COMPLETE LOT CATALOG

DAY 2

Sale Closing From:

Wednesday, December 4, at 9:00 AM ET

Sale Location:

900 Tyrone Pike, Versailles, Kentucky 40383

Inspection:

Monday, December 2 from 9:00 AM – 4:00 PM ET



VARIOUS SIZES

7 AVAILABLE

REMSTAR AUTOMATED STORAGE/RETRIEVAL CAROUSELS



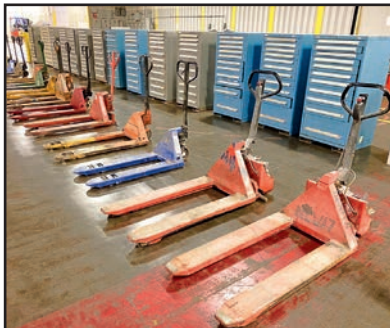
\$1,000,000+ REPLACEMENT VALUE

LARGE QUANTITY OF ASSORTED BEARINGS



\$2,250,000+ REPLACEMENT VALUE

LARGE QUANTITY OF BOARDS, PANELS, DRIVES, SERVO MOTORS, WIRE & CABLE & ADDITIONAL ELECTRICAL



PALLET JACKS & BALL BEARING TOOL CABINETS

FACTORY & SUPPORT EQUIPMENT

2003 CATERPILLAR 400 KW DIESEL GENERATOR, 500 KVA, 3406 Diesel Engine

CATERPILLAR SR-4 260 KW DIESEL GENERATOR, 325 KVA, 3406 Diesel Engine

(2) TOYOTA AUTOMATED GUIDED ELECTRIC TUGGERS, w/Roller Conveyor Pup Trailer

(3) ATLAS COPCO ZR275 333 HP AIR COMPRESSORS
ATLAS COPCO GA37 50 HP AIR COMPRESSOR

2016 NANO NBP-1500ES AIR DRYER SYSTEM

QUINCY, UNIVERSAL & SULLAIR VACUUM PUMPS

KILN MFG LD230 2350 DEG ELECTRIC KILN

THERMO 8300HN20AN GAS MIXING SYSTEM

(7) REMSTAR AUTOMATED STORAGE/RETRIEVAL CAROUSELS, Various Sizes

(22) LISTA, STANLEY VIDMAR, LYON & NU-ERA MULTI-DRAWER TOOL CABINETS

(16) STRONGHOLD, LYON & DURHAM HEAVY DUTY SHOP CABINETS



QUINCY QSVI-40 VACUUM PUMP SYSTEM



2 AVAILABLE

TOYOTA AUTOMATED GUIDED ELECTRIC TUGGERS



2003

500 KVA

CATERPILLAR 3406 DIESEL GENERATOR

View our current auction schedule at www.perfectionindustrial.com

FACTORY & SUPPORT EQUIPMENT CONTINUED...



SECURALL PORTABLE HAZARDOUS MATERIAL STORAGE BUILDING

FACTORY & SUPPORT EQUIPMENT

SECURALL PORTABLE HAZARDOUS MATERIAL STORAGE BUILDING
 MAREN ENGINEERING NO72 HORIZONTAL BALER
 (5) SP INDUSTRIES VERTICAL BALERS
 LANTECH S-AUTO PALLET WRAP SYSTEM
 (2) LANTECH CUSTOM RING WRAPPERS
 LANTECH Q-300XT PALLET WRAPPER
 (5) LANTECH PALLET WRAPPER, Various Models
 (8) SIGNODE LBX2330 AUTO-STRAPPING SYSTEMS
 (16) NORDSON, KEYSTONE & GRACO DISPENSING MACHINES
 (2) NILFISK CFM 3707/10A INDUSTRIAL VACUUMS



MAREN ENGINEERING NO72 HORIZONTAL BALER



2 AVAILABLE

NILFISK CFM 3707/10A INDUSTRIAL VACUUMS

ALSO AVAILABLE: GREENLEE & RIDGID POWER TOOLS, SOUTHWORTH, PRESTO & BISHAMON HYD SCISSOR TABLES, ADJUSTABLE PALLET RACKING, FLAMMABLE LIQUID STORAGE CABINETS, HARDWOOD TOP WORK BENCHES, SHOP CRANES, SAFETY LADDERS, DRUM STORAGE CABINETS, DUMPING HOPPERS, FLOOR SCALES, VACUUM PUMPS, BAR CODE PRINTERS, SHOP FANS, BANDING CARTS & TOOLS



ASSORTED PALLET RACKING



16 AVAILABLE

NORDSON, KEYSTONE & GRACO DISPENSING MACHINES



2 AVAILABLE

LANTECH CUSTOM RING WRAPPERS

LANTECH PALLET WRAPPER, VARIOUS MODELS

5 AVAILABLE



LANTECH S-AUTO PALLET WRAP SYSTEM



8 AVAILABLE

SIGNODE LBX2330 AUTO-STRAPPING SYSTEMS



View our current auction schedule at www.perfectionindustrial.com

WORLDWIDE LEADER IN LIGHTING CLOSING 1,000,000 SQ. FT. VERSAILLES, KENTUCKY FACILITY



DAY 1

Sale Closing From:
 Tuesday, December 3,
 at 9:00 AM ET
Sale Location:
 900 Tyrone Pike, Versailles,
 Kentucky 40383
Inspection:
 Monday, December 2
 from 9:00 AM – 4:00 PM ET

DAY 2

Sale Closing From:
 Wednesday, December 4,
 at 9:00 AM ET
Sale Location:
 900 Tyrone Pike, Versailles,
 Kentucky 40383
Inspection:
 Monday, December 2
 from 9:00 AM – 4:00 PM ET

TERMS OF SALE

An 21% buyer's premium will be charged on all assets. The buyer's premium will be reduced to 18% for payments made by means of cashier's check or wire transfer within 48 hours of sale close. If paying by company check, a paid in full invoice will be issued upon the check clearing. Credit card payments are limited to a maximum of \$2,000. All items are sold "As is, Where is" without any warranty, express or implied.

FOR FURTHER INFORMATION

For further information contact Jennifer Reiner at +1-847-545-6374 or jennifer@perfectionindustrial.com. For accounting and invoicing questions, contact Inesa Dicipetris at +1-847-427-3333 or inesa@perfectionindustrial.com.

REMOVAL

Removal is strictly by appointment between Monday, December 9 and Friday, December 20. Removal hours are Monday through Friday, from 9:00 AM to 4:00 PM ET. Extended hours and weekends may be accommodated with prior arrangement. Anyone removing purchased items with a lift truck or another powered vehicle must have a certificate of insurance with a \$2M General Liability policy, and that certificate must be provided to the auctioneer for review and approval prior to the auction.

To discuss your requirements for an auction, please call Perfection Industrial +1.847.427.3333



**PERFECTION
 Industrial Sales**

Perfection Industrial Sales
www.perfectionindustrial.com

Online Bidding at
www.perfectionindustrial.com

ph +1-847-545-6374
 fax +1-847-427-8884

Joe Lundvick, KY Auctioneer License # RP 4236 & Scott Lonkart, PA Auctioneer License # AU003232R

Sale is Being Held in Conjunction With:



**The
 Branford
 GROUP**
 Equipment Auctions Worldwide

ph 203-488-7020 • www.TheBranfordGroup.com